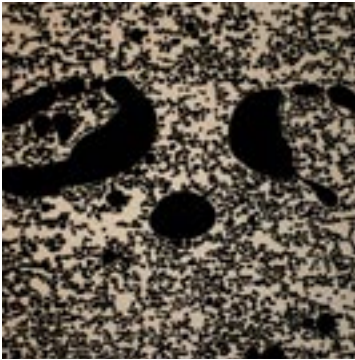


PRESS RELEASE**MAIN GALLERY:****MANDY URE**
DESPERATE REMEDIES
2 JULY – 30 JUNE 2006**INVITATION TO THE OPENING: SATURDAY 1st JULY, 5PM TO 8PM.**
THE ARTIST WILL BE PRESENT AT THE OPENING

Mandy Ure
Painting no.71 (detail)
Copyright: the Artist

Mandy Ure's paintings play a game with recognition. Some are oblique, others are almost dumbly self-evident, but all of Ure's paintings present the viewer with rudimentary images whose delivery is a kind of deadpan deception.

Ure's process of manufacture combines the repetitive nature of mechanised labour with absolute chance in almost equal measure. Constructed from hundreds and thousands of individually applied cells of paint that seem to swarm over and around the canvas, the paintings possess a continuous surface that creates an exhausting push-pull effect between their material structure and their image content.

Ure's images only emerge through the most basic of outlines combined with a separation in colour between the part of the painting that becomes the image and that that becomes the ground. These decisions alone organise the activity of the paint, forcing it to become descriptive, to name its coalesced parts as a thing from the world – a body part, a plant, an animal's face – rather than remaining in uniform anonymity.

For her exhibition at Marksman, Ure has constructed two opposing groupings of paintings for the gallery's different spaces. Her selection works to create a gradual release of information that quietly seduces the viewer with less recognisable forms before immersing them in a cartoon climax of clashing colour combinations and acid-addled animals.

In 2003 Mandy Ure's work was shown in scenery at Richard Salmon Gallery, London; and Santa Maria del Soccorso, 50th Venice Biennale; *Mandy Ure* Holly Snapp Gallery, Venice; *Nightwood* Rhodes+Mann Gallery, London. Her work was also included in *Painting*: London at Holly Snapp Gallery, Venice Biennale in 2005. Exhibitions in 2006 include *Picnic Area (dumb interior)*, Room, Bristol and *Altered Beast*, Three Colt's Lane, London.

CONT PAGE 2

SHOWING IN THE MARKSMAN PROJECT SPACE:

RUTH TODHUNTER

SHELF

2 JULY – 30 JUNE 2006

INVITATION TO THE OPENING: SATURDAY 1st JULY, 5PM TO 8PM.
THE ARTIST WILL BE PRESENT AT THE OPENING



Ruth Todhunter
Shelf (projection detail)
Copyright: the Artist

Ruth Todhunter selects functional objects from the familiar realm of the domestic and the industrial to make abstract compositions about light, colour, texture and shape. In these works, made as photographs, video film, or installation, the objects lose their identity and function, becoming almost unrecognisable as an emphasis on form or colour takes priority.

The approach to making the work is akin to that of painting; every element is carefully controlled, considered, reassessed and changed until the final composition is achieved. Minute changes in lighting or angle make vast differences to the tone, hue or density of colour.

Ruth Todhunter has recently graduated from the Royal Academy Schools, London and has since shown at *Platform for Art Piccadilly Circus Underground Station* 2005

LISTING INFORMATION

(PLEASE NOTE THE CHANGE FROM PREVIOUS OPENING HOURS)

MARKSMAN GALLERY

MAIN GALLERIES:

MANDY URE - DESPERATE REMEDIES

2ND JULY - 30TH JULY

PROJECT SPACE:

RUTH TODHUNTER - SHELF

2ND JULY - 30TH JULY

Opening Hours: Weds - Sat 12 - 6pm

FREE ENTRY

MARKSMAN GALLERY

10 Gun Street - Reading - RG1 2JR

e: info@marksmangallery.co.uk

www.marksmangallery.co.uk

t: +44 (0) 7841 582 010

EDITORS NOTES

For further press information and images please contact: Emma Jamieson or Roger Pryn on:

+44 (0) 7841 582 010 or +44 (0) 07967 315 953

email: info@marksmangallery.co.uk

MARKSMAN GALLERY